



Masa's photo number, title, date, logo credit

57-377-B, Cow with triple calves, B. of T., 3-19-21, Plateau Studios
5 x 7 inch negative

N948, *E. M. Ball Photographic Collection (1918-1969)*,
D. H. Ramsey Library, Special Collections, University of
North Carolina at Asheville 28804

This photograph was taken for the Board of Trade ("B. of T.") in Asheville



Masa's photo number, title, date, logo credit

0-138, Farmer with grapes
8 x 10 inch print

82-10-315, James G.K. McClure, Jr. Collection, Southern Appalachian Archives, Mars Hill University

The reverse of the print is stamped "Photographed by Asheville Photo Service."

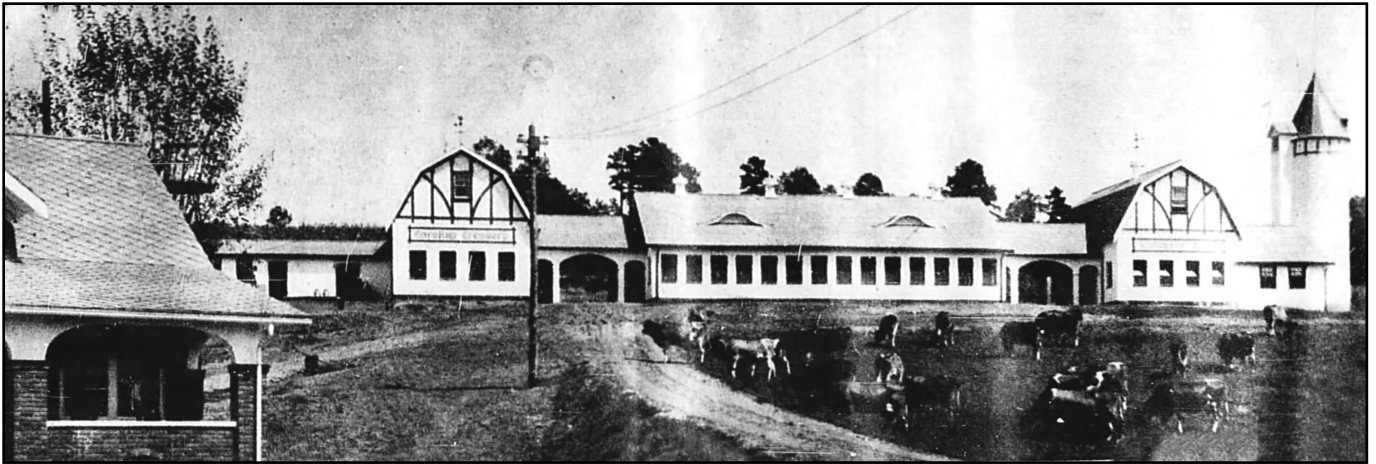
PUBLISHED IN:

Asheville, The Land of the Sky, The Chamber of Commerce Asheville, North Carolina, 1926, page 45

Asheville North Carolina "In the Land of the Sky," The Chamber of Commerce Asheville, North Carolina, 1928, page 44

Asheville North Carolina "In the Land of the Sky," The Chamber of Commerce Asheville, North Carolina, 1929, page 44

Carolina Mountain Breezes, Eloise Buckner Ebbs, 1929, page 202



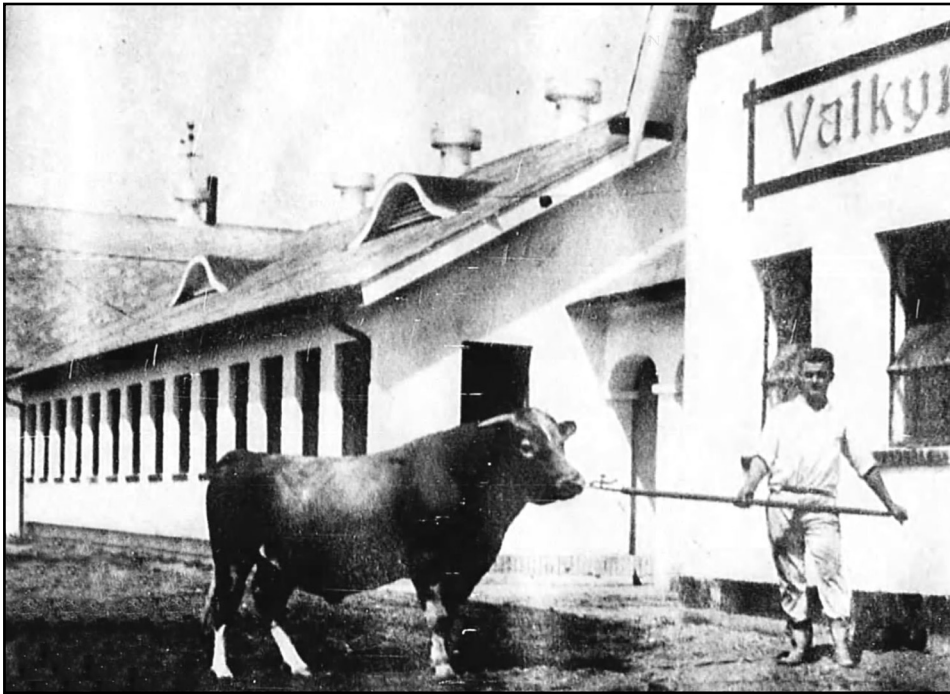
Masa's photo number, title, date, logo credit

0-915, Valkyrie Farm
newspaper illustration

Asheville Citizen-Times, October 7, 1923, page 39

The photo caption reads: "Valkyrie Farm, recently established by the Carolina Creamery Company on the Waynesville Highway."

The credit states: "Plateau Studio"



Masa's photo number, title, date, logo credit

0-916, Chilmark, Valkyrie Farm
newspaper illustration

Asheville Citizen-Times, October 7, 1923, page 39

The photo caption reads: "Valkyrie Farm, recently established by the Carolina Creamery Company on the Waynesville Highway, is one of the most complete in America. Its gurnsey [sic] herd is one of the choicest breeding. 'Chilmark' is the senior herd sire."

The credit states: "Plateau Studio"



Masa's photo number, title, date, logo credit

0-2399, Farmer's field lined with flowering trees
8 x 10 inch print

82-10-908, James G.K. McClure, Jr. Collection, Southern
Appalachian Archives, Mars Hill University

This document originates from the George Masa Photograph Database Project created by Angelyn Whitmeyer.

A complete Database, Photo Description Sheets, and Comments on Photographs and Collections regarding Masa's still photographs can be downloaded from:

GeorgeMasaPhotoDatabase.com

Although this document and the related website are not copyrighted, please use the following citations.

For a specific photograph:

Photograph by George Masa

For documents originating from GeorgeMasaPhotoDatabase.com:

Courtesy Angelyn Whitmeyer, Creator, George Masa
Photograph Database Project

Check with an archiving institution for the appropriate permission and attribution for the George Masa photographs they hold.

Thank you for employing correct attributions.