

**Masa's photo number, title, date, logo credit**

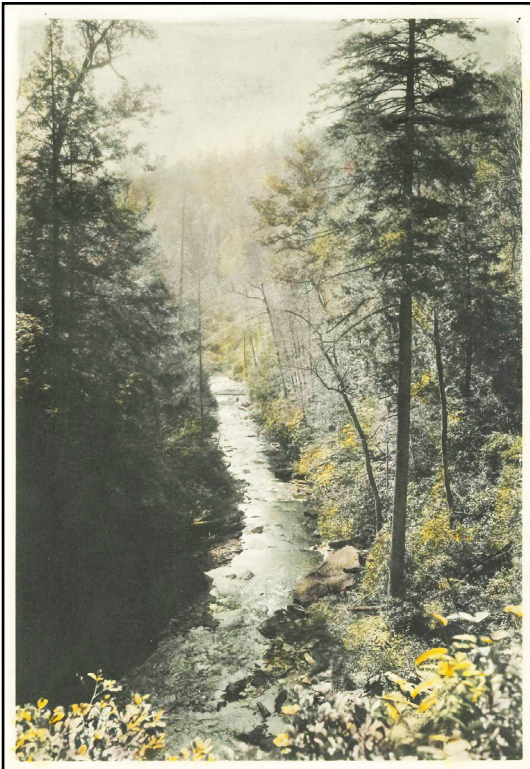
57-563, Looking Glass Creek, Mount Pisgah, from  
top of falls  
7 x 5 inch negative

N1005, *E. M. Ball Photographic Collection (1918-1969)*,  
D. H. Ramsey Library, Special Collections, University of  
North Carolina at Asheville 28804



published by Asheville Post  
Card Co.

The number "563" can be found on the top margin of the negative.

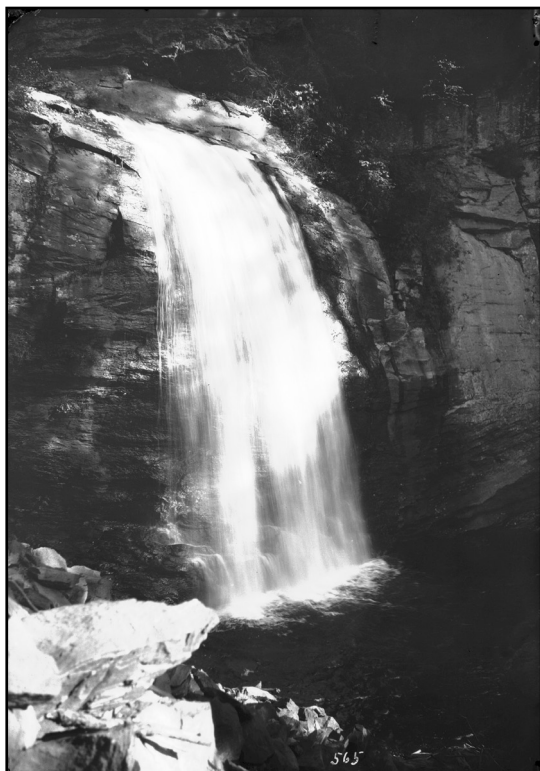


**Masa's photo number, title, date, logo credit**

57-563, Looking Glass Creek, Mount Pisgah, from  
top of falls  
7 x 5 inch print

57-563, *Asheville Citizen-Times* Photograph Collection  
(P2023.01), George Masa Series, D. H. Ramsey Library,  
Special Collections, University of North Carolina at  
Asheville 28804

The print held in the *Asheville Citizen-Times* Photograph Collection has been hand-colored.



**Masa's photo number, title, date, logo credit**

57-565, Looking Glass Falls, from side bank  
7 x 5 inch negative

N1002, *E. M. Ball Photographic Collection (1918-1969)*,  
D. H. Ramsey Library, Special Collections, University of  
North Carolina at Asheville 28804

The number "565" can be found on the top margin of the negative.

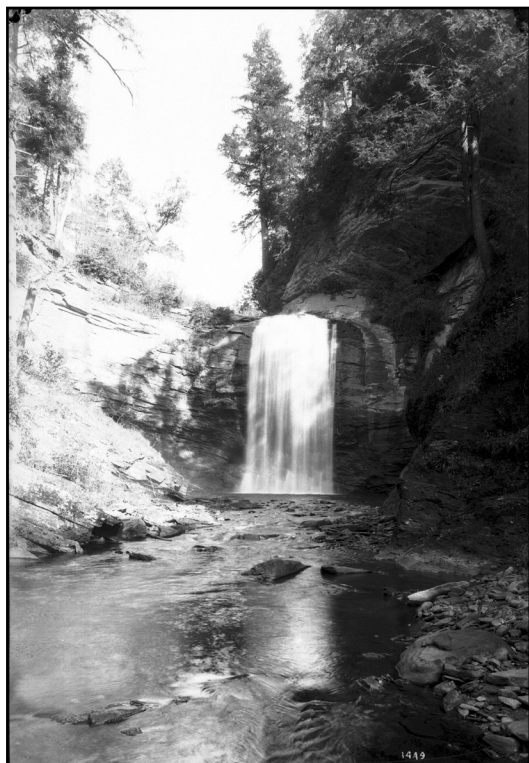


**Masa's photo number, title, date, logo credit**

57-1400, Looking Glass Falls  
7 x 5 inch negative

N1095, *E. M. Ball Photographic Collection (1918-1969)*,  
D. H. Ramsey Library, Special Collections, University of  
North Carolina at Asheville 28804

Compare this image with Database Code FALLS.03 (0-3023) which was taken some years later and which has a couple figures at the top of the falls.



**Masa's photo number, title, date, logo credit**

57-1449, Looking Glass Falls  
7 x 5 inch negative

N1099, *E. M. Ball Photographic Collection (1918-1969)*,  
D. H. Ramsey Library, Special Collections, University of  
North Carolina at Asheville 28804



**Masa's photo number, title, date, logo credit**

57-1459, Looking Glass Falls  
7 x 5 inch negative

N1095A, *E. M. Ball Photographic Collection (1918-1969)*, D. H. Ramsey Library, Special Collections, University of North Carolina at Asheville 28804



**Masa's photo number, title, date, logo credit**

0-3023, Looking Glass Falls  
10 x 8 inch print

K159-8M, Buncombe County Special Collections, Pack  
Memorial Public Library, Asheville, North Carolina



published by Asheville Post  
Card Co.

Compare this image with Database Code FALLS.03 (57-1400) which was taken some years earlier -- prior to the sale of Plateau Studios to Ewart Ball. Notice the figures at the top of the falls (which have been removed from the postcard).

The Hart Collection contains a 10 x 8 inch print of this photograph.

A 10 x 8 inch print of this image is in the *Asheville-Citizen Times* Photograph Collection (P2023.01) at Ramsey Library.

**PUBLISHED IN:**

*Asheville, North Carolina*, Asheville Chamber of Commerce, "Scenic photographs by the late George Masa and by Elliot Lyman Fisher," page 4

*The Fourth Service Command Welcomes You to the AGF -- ASF Redistribution Station, Asheville North Carolina*, U.S. Army, ca. 1945

*High Tops "In the Land of the Sky" A Guide to Western North Carolina*, 1947, cover



**Masa's photo number, title, date, logo credit**

0-5456, Looking Glass Falls  
10 x 8 inch print

MA122-8, Buncombe County Special Collections, Pack  
Memorial Public Library, Asheville, North Carolina

**PUBLISHED IN:**

George Masa: A Life Reimagined, Janet McCue and Paul Bonesteel, 2024, after page 70

This document originates from the George Masa Photograph Database Project created by Angelyn Whitmeyer.

A complete Database, Photo Description Sheets, and Comments on Photographs and Collections regarding Masa's still photographs can be downloaded from:

[GeorgeMasaPhotoDatabase.com](http://GeorgeMasaPhotoDatabase.com)

Although this document and the related website are not copyrighted, please use the following citations.

For a specific photograph:

Photograph by George Masa

For documents originating from [GeorgeMasaPhotoDatabase.com](http://GeorgeMasaPhotoDatabase.com):

Courtesy Angelyn Whitmeyer, Creator, George Masa  
Photograph Database Project

Check with an archiving institution for the appropriate permission and attribution for the George Masa photographs they hold.

Thank you for employing correct attributions.