



**Masa's photo number, title, date, logo credit**

-----, Blooming rhododendron in Craggies [left side of panorama], 1921, Plateau Studios  
7 x 12 inch print

Private Collection



The panorama was hand-tinted, reportedly by Blanche Creasman. See [George Masa: A Life Reimagined](#), Janet McCue and Paul Bonesteel, 2024, pages 48 and 165.



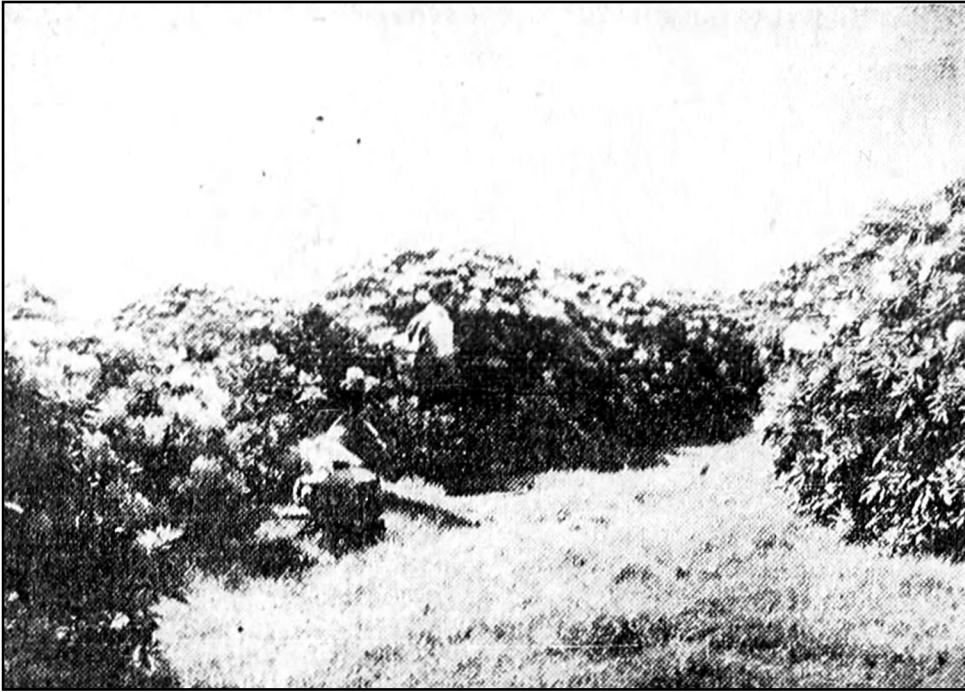
**Masa's photo number, title, date, logo credit**

-----, Blooming rhododendron in Craggies  
[right side of panorama], 1921, Plateau Studios  
7 x 12 inch print

Private Collection



The panorama was hand-tinted, reportedly by Blanche Creasman. See [George Masa: A Life Reimagined](#), Janet McCue and Paul Bonesteel, 2024, pages 48 and 165.



**Masa's photo number, title, date, logo credit**

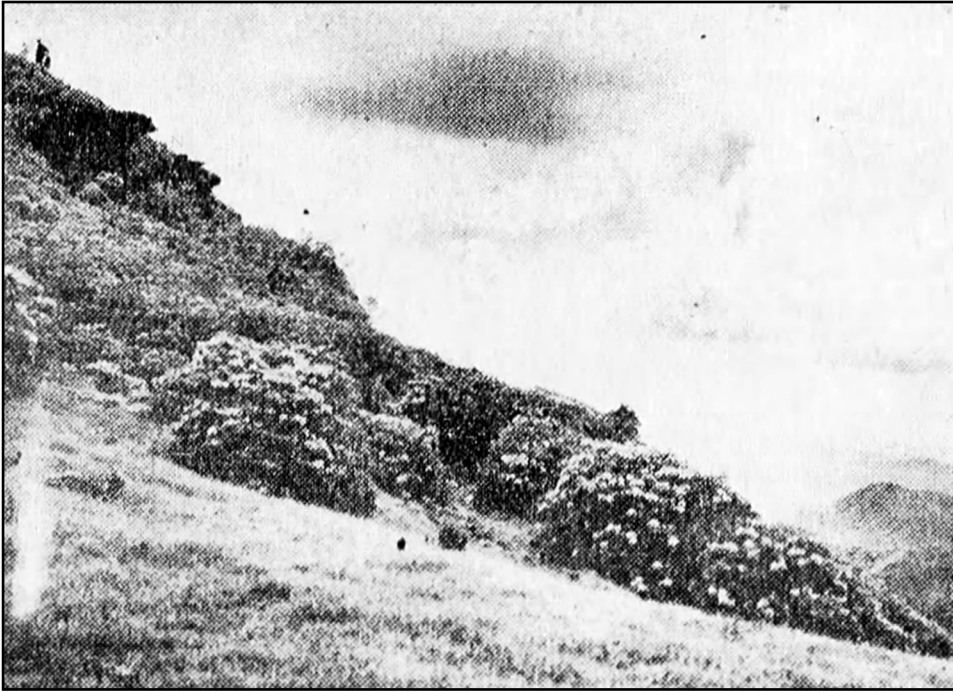
-----, Craggy Flats with rhododendron  
newspaper illustration

*The Asheville Citizen-Times*, June 26, 1932, page 20

Notice the two figures in the center of the photo.

This photograph was probably taken on June 19, 1932. See "Appendix I - Masa Journal Transcription with Associated Photograph Numbers" for details.

For another photo from the same trip, see Database Code CRAG.00 (S-166).



**Masa's photo number, title, date, logo credit**

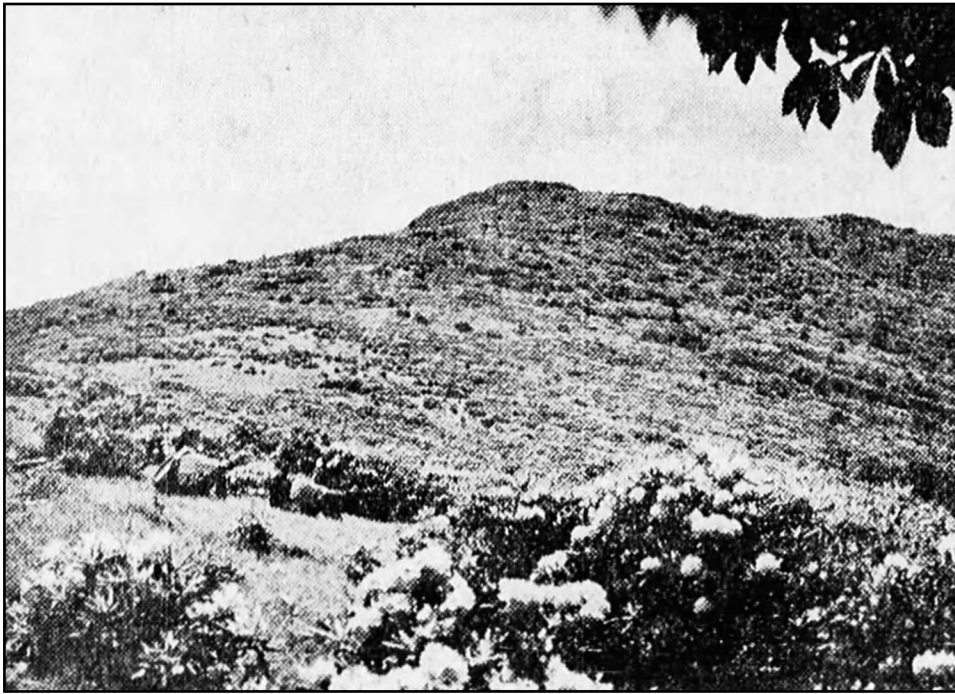
-----, Craggy Flats with rhododendron  
newspaper illustration

*The Asheville Citizen-Times*, June 26, 1932, page 20

Notice the figures on the top left of the ridge.

This photograph was probably taken on June 19, 1932. See "Appendix I - Masa Journal Transcription with Associated Photograph Numbers" for details.

For another photo from the same trip, see Database Code CRAG.00 (S-166).



**Masa's photo number, title, date, logo credit**

-----, Craggy Flats with rhododendron  
newspaper illustration

*The Asheville Citizen-Times*, June 26, 1932, page 20

Notice the figures in the left center of the photo.

This photograph was probably taken on June 19, 1932. See "Appendix I - Masa Journal Transcription with Associated Photograph Numbers" for details.

For another photo from the same trip, see Database Code CRAG.00 (S-166).

This document originates from the George Masa Photograph Database Project created by Angelyn Whitmeyer.

A complete Database, Photo Description Sheets, and Comments on Photographs and Collections regarding Masa's still photographs can be downloaded from:

[GeorgeMasaPhotoDatabase.com](http://GeorgeMasaPhotoDatabase.com)

Although this document and the related website are not copyrighted, please use the following citations.

For a specific photograph:

Photograph by George Masa

For documents originating from [GeorgeMasaPhotoDatabase.com](http://GeorgeMasaPhotoDatabase.com):

Courtesy Angelyn Whitmeyer, Creator, George Masa  
Photograph Database Project

Check with an archiving institution for the appropriate permission and attribution for the George Masa photographs they hold.

Thank you for employing correct attributions.