

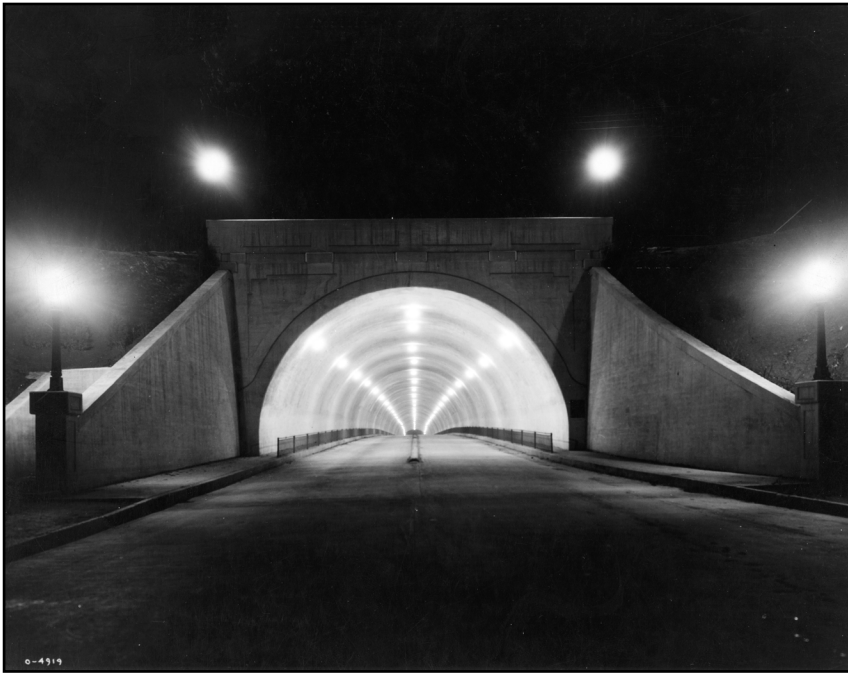
Masa's photo number, title, date, logo credit

0-134, View of Asheville from Proposed Tunnel
newspaper illustration

Asheville Citizen-Times, February 1, 1925, page 19

The photo caption reads: "Construction of a 400-foot tunnel through Beaucatcher Mountain and about 150 feet south of the Gap is proposed by Robert S. Brown, president of the Asheville Real Estate Board, and an experienced civil engineer. Such a project would afford an eastern gateway to the city and would be a distinct advertising asset for Asheville. Tourists traveling through the tunnel toward the city would be treated upon emerging, to a magnificent panoramic view of the city, mountains and sky."

Goerge Masa's photo number can be read on the lower left of the image.



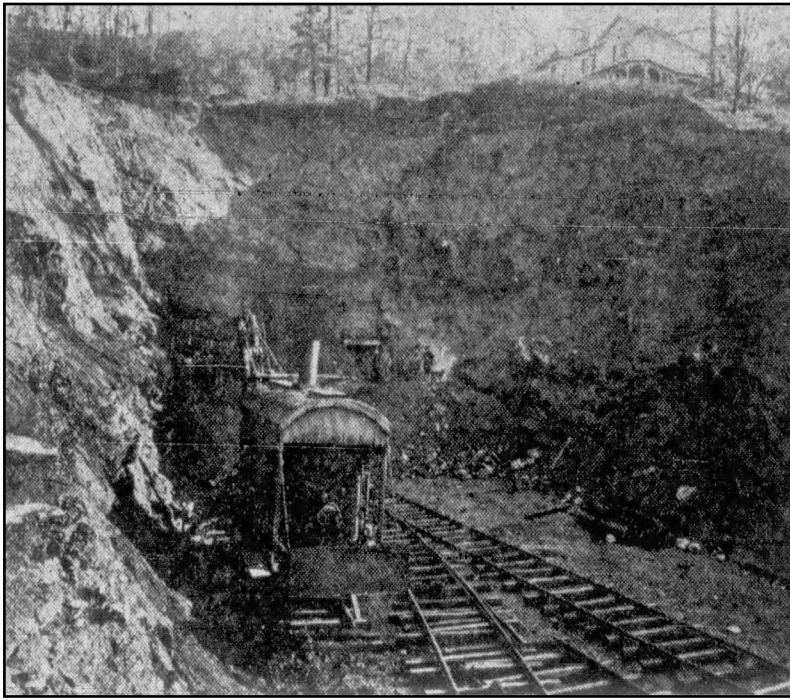
Masa's photo number, title, date, logo credit

0-4919, Beaucatcher Mountain Tunnel at night
8 x 10 inch print

Accession no. 1958.24.103, North Carolina Museum of
History, Raleigh, NC

The reverse of the print has the notation: "Beaucatcher Mountain Tunnel, 980 feet in length, connecting city of Asheville, N.C. with eastern transmountain area by easy grade. On State Highway #10."

Compare this image with Database Code ASHE.30.003 which is the same subject, photographed during the day.



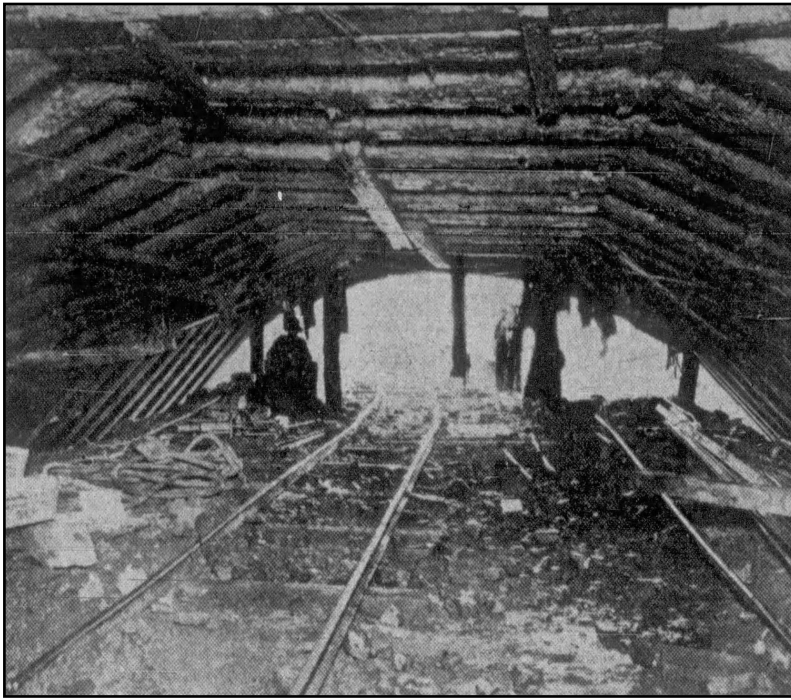
Masa's photo number, title, date, logo credit

-----, Boring into a Mountain of Earth and Stone for Gigantic Tunnel
newspaper illustration

Asheville Citizen-Times, January 15, 1928, page 15

The newspaper's credit line reads: "Photo by Asheville Photo Service."

This image shows the equipment being used for a "pilot tunnel" which eventually became the Beaucatcher Tunnel.



Masa's photo number, title, date, logo credit

-----, Boring into a Mountain of Earth and Stone for Gigantic Tunnel
newspaper illustration

Asheville Citizen-Times, January 15, 1928, page 15

The newspaper's credit line reads: "Photo by Asheville Photo Service."

The photo number on the lower left has been cropped. What remains is "49."



Masa's photo number, title, date, logo credit

-----, Beaucatcher Mountain Tunnel
8 x 10 inch print

Accession no. 1958.24.102, North Carolina Museum of
History, Raleigh, NC

The reverse of the print has the notation: "Beaucatcher Mountain Tunnel, 980 feet in length, connecting city of Asheville, N.C. with eastern transmountain area by easy grade. On State Highway #10."

Compare this image with Database Code ASHE.30 (0-4919) which is the same subject, photographed at night.

Notice the people standing above the tunnel, on the left.

PUBLISHED IN:

The Asheville Citizen-Times, September 14, 1930, page 11

This document originates from the George Masa Photograph Database Project created by Angelyn Whitmeyer.

A complete Database, Photo Description Sheets, and Comments on Photographs and Collections regarding Masa's still photographs can be downloaded from:

GeorgeMasaPhotoDatabase.com

Although this document and the related website are not copyrighted, please use the following citations.

For a specific photograph:

Photograph by George Masa

For documents originating from GeorgeMasaPhotoDatabase.com:

Courtesy Angelyn Whitmeyer, Creator, George Masa
Photograph Database Project

Check with an archiving institution for the appropriate permission and attribution for the George Masa photographs they hold.

Thank you for employing correct attributions.